

Overview



- 8 Analog Input Channels: Supports multiple input types, including Pt100 probes, voltage (0-10V, 0-5V), and current (0/4-20mA).
- Compatible with both Modbus RTU and Modbus TCP protocols, ensuring seamless integration into industrial networks.
- Flexible Interface Options: Equipped with RS485, RS232, and Ethernet interfaces for flexible communication.
- High Accuracy: Features $\pm 0.2\%$ accuracy for precise measurement of current, voltage, and resistance signals.
- Data Logging Capabilities: Internal flash memory for archiving data, with up to 8 MB of storage and battery backup for up to 5 years.
- DIN Rail Mounting: Compact design with DIN rail compatibility for easy installation in industrial environments.
- Easy Integration: Can be used as a Modbus slave extension module with Advanticsys gateways or third-party Modbus masters.

Characteristics

General

Power Supply:	9 – 36 VDC
Overvoltage Protection:	>1000V (max. 5 seconds)
Power Consumption:	<10 VA
Galvanic Isolation:	$\geq 1000V$

Specifications

CPU:	ARM7 (55MHz)
Flash memory:	8 MB

Interfaces

RS232:	Up to 15 m, speed up to 19.2 Kbps
RS485:	Up to 1.2 km, speed up to 19.2 Kbps
USB:	Type B, version 2.0 (for configuration)
Ethernet:	RJ45, Twisted Pair Ethernet, 10/100 Mbps

Analog Inputs: Supports resistance, voltage, and current inputs, with up to 8 simultaneous channels.

Analog inputs

Current:	0/4-20mA, 0-5 mA $\pm 0,2\%$, input resistance 250 Ω
Voltage:	0-10V, 0-5V $\pm 0,2\%$, input resistance 10k Ω
PT100:	80-250 Ω (-50 to +400°C) $\pm 0,2\%$
PT1000:	850-1950 Ω (-40 to +250°C) $\pm 0,2\%$
Resistance:	0-30k Ω $\pm 0,2\%$

Supported Protocols

Modbus RTU, Modbus TCP/IP, IP, ICMP, UDP, TCP, DHCP, PPP, ARP, IEC60870-5-104:2000

LED Indicators

Power Status
Read/Write Activity for each port
Ethernet Connection Status

Environmental Conditions

Operating Temperature: -25°C to +60°C
Storage Temperature: -40°C to +60°C
Humidity Range: 5% to 95%, non-condensing

Regulatory approvals

EN 55022:2000+A1+AC:2002+A2:2003
EN 61000-4-4:2005
EN 55024:2000+A1:2003+A2:2003
EN 61000-4-5:2002+A1:2003
EN 61000-4-2+A1+A2:2002
EN 61000-4-6:2002+A1:2003
EN 61000-4-3+A1:2004



Physical characteristics

Dimensions:	120x101x35 mm
Weight:	170 g
Material:	PC/ABS
Protection type:	IP20

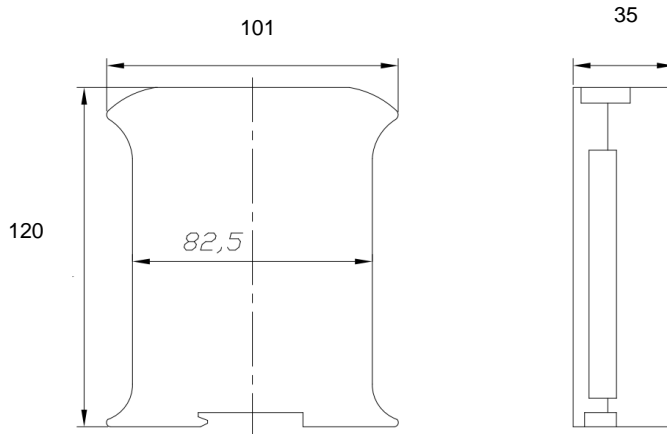
Mounting

DIN rail compatible

Other features

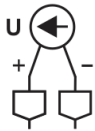
Made in the EU

Dimensions (mm)

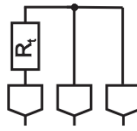


Connection diagrams

All the connection terminal blocks are removable, which facilitate the wiring process.



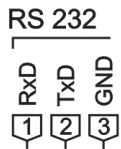
Voltage input (0..5/0..10 V)



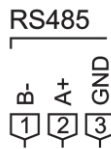
R input (PT100 / 0..30KΩ)



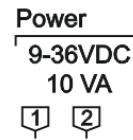
Current input



RS232 port



RS485 port



Power supply (w/o polarity)

Ordering code

MODEL	Interface	Interface	Interface	RTC	Analog inputs							
701.009.	A	B	C	D	E	F	G	H	I	J	K	L
0 – None 1 – RS485 2 – RS232 0 – None 1 – Ethernet 1 – USB 1 – Real-time Clock 0 – None 1 – Current input 2 – Voltage input (0..5V) 3 – Voltage input (0..10V) 4 – PT100 sensor 5 – PT1000 sensor 7 – Resistance (0..30KΩ)												

The information contained in this datasheet is subject to change without notice. Make sure you are using the latest version.